

Come and explore a place where music and art abound,
the need for speed rules, the scenic hills soar and history comes to life!

Welcome



Located just 20 miles east of Nashville, Tennessee, Wilson County is a vibrant community and an ideal destination for the entire family. Surrounded by pristine lakes and scenic landscapes, Wilson County offers a rare blend of small-town southern hospitality and big-city amenities. We are proud to be the home of the Nashville Superspeedway, Cumberland University, the acclaimed Wilson County Fair and Cracker Barrel.

The quaint communities of Lebanon, Mt. Juliet and Watertown offer a small town feel and boast everything from locally owned antiques to restaurants and shopping.

Tour our quaint town squares, explore our rich history and take in our sights. Find out for yourself why Wilson County truly is "THE PLACE TO BE!"

But don't take our word for it.
Come and see for yourself!



find more online at visitwilsoncounty.com

THE PLACE TO BE
IN MIDDLE TENNESSEE



Find out why
WILSON COUNTY
is the place to be ...

*Live ... Learn ... Shop ...
Work ... Play ...*

BE!

WilsonCountyTN.org

find more online at visitwilsoncounty.com

★ SHOP ★

From quaint antique stores
to the hottest brand names, we
have something for everyone!



★ SHOPPING

LEBANON PREMIUM OUTLETS

1 Outlet Village Blvd., Lebanon | 615-444-0433 | premiumoutlets.com/lebanon
Lebanon Premium Outlets offers shoppers savings of up to 65% on brand names at 60 outlet stores.

PROVIDENCE MARKETPLACE

401 S. Mt. Juliet Rd., Mt. Juliet | 615-773-2298 | shopprovidencemarketplace.com
Visit one of the largest open-air centers in Middle Tennessee. Providence has something for everyone, including a diverse mix of stores, restaurants and a movie theatre.

LEBANON ANTIQUES

Antique Doctor | 107 S. Cumberland St. | 615-444-9964
The Butter Churn | 109 Public Square | 615-449-7376
Coach House Antiques & Gifts | 103 Public Square | 615-449-1905
Cuz's Antique Center | 140 Public Square | 615-444-8070
Downtown Antique Mall | 112 Public Square | 615-444-4966
Antiques on Maple | 218 S. Maple | 615-449-4395
Log Cabin Antiques | 126 Horn Dr. | 615-444-1200
Parkland Flea Market | 4994 Murfreesboro Rd. | 615-449-6050
Screen Door | 104 Public Square | 615-453-5222
Southern Rose Antiques | 105 Public Square | 615-444-3308

MT. JULIET ANTIQUES

Clairren's Treasures | 11907 Lebanon Rd. | 615-758-7272
Howard Rawlings Antiques | 13693 Lebanon Rd. | 615-754-7457
P.J.'s Flea Market | 11520 Lebanon Rd. | 615-754-6232
Providence Traders Indoor Flea Market | 85 Athens Dr. | 615-758-9411

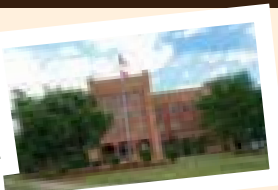
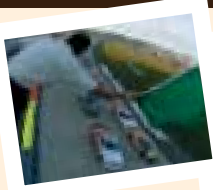
WATERTOWN ANTIQUES

Chase's on Main | 100 W. Main St. | 615-489-3012
Dead Man's General Store | 118 E. Main St. | 615-697-2080
Gypsy Moon | 102 Public Square | 615-300-7233
Jim's Antiques | 314 Public Square | 615-237-1777
Roomer Has It | 210 E. Main St. | 615-483-6541
Town Square Antiques | 308 Public Square | 615-351-6348





★ AREA ATTRACTIONS



Nashville Superspeedway

4847-F McCrary Rd., Lebanon | 1-866-722-3849 | nashvillesuperspeedway.com
Hear the engines roar and feel the ground shake as NASCAR racing roars into Wilson County! Contact the CVB for tour options.

City of Lebanon Museum & History Center

200 Castle Heights Ave. N. | Lebanon | 615-443-2839 | lebanontn.org
Located in the lower level of City Hall, on Castle Heights Historical Site, the museum provides a visual tour of the city's rich history. Admission is free and donations are accepted.

Roy Bailey African American Museum & History Center

115 E. Main St. | Lebanon | 615-449-2911
The Museum and History Center pays homage to the work, struggles and successes of those who built a solid foundation for African American citizens who live and thrive today in Wilson County. Call for hours.



Fiddlers Grove Historic Village

945 E. Baddour Pkwy. | Lebanon | 615-443-2626 | fiddlersgrove.org
See what life was like at the turn of the century in Wilson County as you tour nearly 50 original and replicated buildings. Located at the James E. Ward Agricultural Center, self-guided tours are available. Call for prices.

Excursion Train

220 Willow St. | Nashville | 615-244-9001 | tcr.org
Watch Middle Tennessee roll by you on board one of Tennessee Central Railway's special excursion trains!



Downtown Lebanon Square

Public Square | Lebanon | 615-444-5503
Located at the heart of the Antique City of the South, the Square contains over a dozen antique malls and stores.

The Mill at Lebanon

300 N. Maple St. | Lebanon | 615-443-6901 | themillatlebanon.com
This 200,000 square foot brick factory is an adaptive reuse development of the historic Lebanon Woolen Mills. The Mill currently offers event space, a car museum, restaurants, retail space and more.



Tennessee Civil War Trails

Battle of Lebanon | Seawell Hill Camp | Site of Hatton House | Cedar Grove Cemetery
Explore Wilson County's four Civil War Trails sites at your own pace, and explore the diverse settings where America's destiny was forged. For more information or a guide map, contact the CVB.



Promised Land Trail

Try one of our new, self-guided driving trails and uncover what's hidden just off the beaten path. The tour is set to be released in 2011. For more information, visit tntrailsandbyways.com.

Wilson County Museum

236 W. Main St. | Lebanon | 615-444-9127
The museum serves as a place to preserve the area's heritage and to represent the tracks of those who have passed through, giving direction to the future generations to follow. Hours are by appointment only and donations are appreciated.



Downtown Watertown Square

Public Square | Watertown | 615-237-0270 | watertowntn.com
Take a step back in time and enjoy a day in the rustic community of Watertown. Take a leisurely stroll and experience it for yourself.



Music City Star

Catch the Music City Star Commuter Rail to Downtown Nashville for a day of shopping or sightseeing, and then head back to Wilson County. Stations are located in Lebanon and Mt. Juliet. Call 615-862-8833 or visit musiccitystar.org for details.

Cumberland University

One Cumberland Square | Lebanon | 615-444-2562 | cumberland.edu
Founded in 1842 by the Presbyterian Church as the first School of Law in Tennessee, Cumberland University now offers a broad education based in the liberal arts.



Classic Cars Southeast

917 Carthage Hwy. | Lebanon | 615-449-4300 | classiccarsse.com
Car enthusiasts will love this all-indoor showroom full of world-class antique, classic and muscle cars.

PLAY



★ **PARKS & RECREATION**

LEBANON

Cedars of Lebanon State Park | 328 Cedar Forest Rd. | 615-443-2769
Don Fox Community Park | W. Baddour Pkwy. | 615-449-0303
Sellers Farm State Archeological Area | Poplar Hill Rd. | 615-885-2422

MT. JULIET

Long Hunter State Park | 2910 Hobson Pike | 615-885-2422
Charlie Daniels Park | 1075 Charlie Daniels Pkwy. | 615-758-6522
Sgt. Jerry Mundy Memorial Park | 300 Mundy Memorial Dr. | 615-754-8181
South Mt. Juliet Bark Park | 151 Southeast Springdale | 615-758-6522
Juro Stables | 735 Carver Ln. | 615-773-7433

WATERTOWN

Three Forks Community Park | 8630 Sparta Pike | 615-237-3326

★ **AGRITOURISM**

Support your local farms and farmers by purchasing local vegetables and other locally grown produce.

Contact the CVB for more information.



★ **GOLF**

LEBANON

Hunters Point Golf Course | 615-444-7521

MT. JULIET

Pine Creek Golf Course | 615-449-7272
Windtree Golf Course | 615-754-4653



QUALITY INN
 1-40, Exit 238 on U.S. Highway 231
 615-444-7020 • 800-424-6423
 Free Wireless Internet
 Free Hot Breakfast • Business Center
 Fitness Center • Outdoor Pool
 Guest Laundry • Micro/Fridge Available
 Roxy Movie Theater (behind hotel)
 Close to both Demo's and Cracker Barrel
Brand New Rooms



RAMADA
 1-40 and Highway 231
 Exit 238
 Lebanon, Tennessee

Free Wireless High Speed Internet
 Complimentary Hot Breakfast • Outdoor Swimming Pool
 Whirlpool & Fitness Center • Spacious Meeting Rooms
 Nearby Restaurants/Shopping
615-444-7400



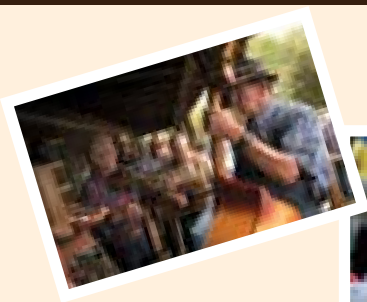
COUNTRY INNS & SUITES
 140 Dixie Avenue
 Lebanon TN

Complimentary Hospitality Hot & Cold Breakfast
 In-room Coffee Maker • Indoor Pool
 Meeting Room • Exercise Facilities
 Adjacent to Premium Outlets
 Wireless High Speed Internet
 Refrigerator/Microwave in Room
615-470-1001 • 800-456-4000



★ ANNUAL EVENTS

★ PLAY ★



JANUARY | FEBRUARY

Polar Bear Plunge
Murder Mystery Excursion Train
to DelMonaco Winery
Valentine's Day Murder Mystery Train

MARCH | APRIL

NASCAR Nationwide Series
Easter Bunny Excursion Train
Dumpling Days
NASCAR Camping World Truck Series
Spring Mile-Long Yard Sale
& Excursion Train

MAY | JUNE

Toast to Tennessee Wine Festival
Excursion Train Robbery Trip

JULY | AUGUST

Wilson County Fair
Watertown Arts & Music Festival
Murder Mystery Excursion Train
NASCAR Camping World Truck Series
Federated Auto Parts 300 NASCAR Nationwide Series

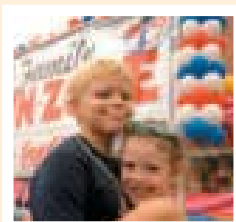
SEPTEMBER | OCTOBER

Pow Wows
Gladefest
Candlelight Walking Tour
of Cedar Grove Cemetery
Fall Mile-Long Yard Sale
& Excursion Train
Taste of Wilson County
Excursion Train Robbery Trip
Oktoberfest
Fiddlers Grove Fall Festival
Halloween on the Square

NOVEMBER | DECEMBER

Murder Mystery Excursion Train
Festival of Lights
North Pole Express Excursion Train
Holiday Parades

*Additional listings and details available online



Silver Ridge
the pottery place

*Contemporary Porcelain in
Colors to Grab Your Heart!*

3712 Chicken Road • Lebanon, TN 37090
615-286-1264 • silverridgepottery.com • LMarch1220@aol.com

**Cedars of Lebanon
State Park**
328 Cedar Forest Road /
Lebanon, TN
615-443-2760 / 800-713-5180
www.tnstateparks.com/Cedars

8am-10pm Summer Hours
8am-6pm Winter Hours

- 12 Cabins
- 117 campsites
- Dickson Merritt Nature Center
- 8 miles of hiking trails
- 6 miles of horse riding trails
- Meeting facilities
- Picnic pavilions
- Playgrounds

★ HOTELS / MOTELS / INNS

LEBANON

America's Best Value Inn & Suites

822 S. Cumberland St. | 615-449-5781 | 888-315-2378
hotellinllebanon.com

Comfort Suites

904 Murfreesboro Rd. | 615-443-0027 | 800-424-6423
comfordsuites.com

Country Inn & Suites

140 Dixie Ave. | 615-470-1001 | 800-456-4000 | countryinns.com
See ad on page 4.

Days Inn

914 Murfreesboro Rd. | 615-444-5635 | daysinn.com

Econolodge

829 S. Cumberland St. | 615-444-1001 | 800-228-5150
econolodge.com

Executive Inn

631 S. Cumberland St. | 615-444-0505 | 800-528-1234

Hampton Inn & Suites

1065 Franklin Rd. | 615-444-3445 | 800-HAMPTON
hamptoninn.com

Holiday Inn Express & Suites

826 S. Cumberland St. | 615-994-3225 | 800-465-4329
hiexpress.com

LEBANON

Knights Inn

903 Murfreesboro Rd. | 615-449-2900 | 800-843-5644 | knightsinn.com

Quality Inn

641 S. Cumberland St. | 615-444-7020 | 800-424-6423 | qualityinn.com
See ad on page 4.

Ramada Inn

704 S. Cumberland St. | 615-444-7400 | ramadainn.com
See ad on page 4.

Sleep Inn & Suites

150 Eastgate Ct. | 615-449-7005 | sleepinn.com

Super 8

914 Murfreesboro Rd. | 615-444-5637 | 800-800-8000 | super8.com

Value Place

205 Eastgate Ct. | 615-453-9087 | valueplace.com

MT. JULIET

Comfort Suites

600 Red Ink Dr. | 615-206-3310 | comfordsuites.com

Hampton Inn & Suites

5001 Crossing Circle | 615-553-5900 | 800-HAMPTON | hamptoninn.com

Holiday Inn Express & Suites

565 S. Mt. Juliet Rd. | 615-553-5200 | 800-465-4329 | hiexpressmj.com
See ad on page 7.

Quality Inn & Suites

1000 Herschel Dr. | 615-773-3600 | 800-771-7171 | qualityinn.com

★ BED & BREAKFASTS AND UNIQUE RETREATS

Cedars of Lebanon State Park

328 Cedar Forest Rd. | Lebanon | 615-443-2769

Rockhaven Cottages

147 Mines Rd. | Mt. Juliet | 615-449-5227

Watermelon Moon Farm Bed & Breakfast

10575 Trousdale Ferry Pk. | Lebanon | 615-444-2356

Watertown Bed & Breakfast

116 Depot Ave. | Watertown | 615-237-9999

★ DINE WITH US

From mouth-watering Southern-style dishes to unique and flavorful creations, Wilson County has an abundant selection of restaurants!

Contact the CVB for our Restaurant Guide, or view detailed listings online.

find more online at visitwilsoncounty.com

★ CAMPGROUNDS

Cedars of Lebanon State Park

328 Cedar Forest Rd. | Lebanon | 615-443-2769

Countryside Resort

2100 Safari Camp Rd. | Lebanon | 615-449-5527

James E. Ward Agricultural Center

945 E. Baddour Pkwy. | Lebanon | 615-449-9077

McCrary's Campground

4775 McCrary Rd. | Lebanon | 615-443-3469

Shady Acres RV Park

1639 Murfreesboro Rd. | Lebanon | 615-449-5400

Timberline Campground

1204 Murfreesboro Rd. | Lebanon | 615-449-2831





★ **USEFUL INFORMATION**

**CHAMBERS OF COMMERCE
& ECONOMIC DEVELOPMENT**

Lebanon/Wilson County Chamber of Commerce
615-444-5503 | lebanonwilsonchamber.com

Mt. Juliet/West Wilson Chamber of Commerce
615-758-3478 | mtjulietchamber.com

Watertown/East Wilson Chamber of Commerce
615-237-0270 | watertowntn.com

**Joint Economic & Community Development
Board of Wilson County**
615-443-1210 | doingbiz.org

LIBRARIES & ARCHIVES

Lebanon Public Library | 615-444-0632
Mt. Juliet Public Library | 615-758-7051
Watertown Public Library | 615-237-9700
Wilson County Archives | 615-443-1993

AIRPORTS

Lebanon Municipal Airport | 615-444-0031
Nashville International Airport | 615-275-1675

HOSPITALS

University Medical Center
1411 W. Baddour Pkwy. | Lebanon | 615-444-8262

QUICK FACTS

Wilson Co. Population 109,803	Avg. Annual Temp 57.7°
Lebanon 24,812	Avg. January Temp 36.0°
Mt. Juliet 25,234	Avg. July Temp 78.1°
Watertown 1,390	Avg. Annual Precip 52.2"

All information subject to change. For additional listings and information, please visit visitwilsoncounty.com.



For complete visitor information on Tennessee, log on to tnvacation.com or call 1-800-GO2-TENN.



565 S. Mount Juliet Road
Mount Juliet, TN 37122
P: (615) 553-5200
F: (615) 553-5210
www.hiexpressmj.com
info@hiexpressmj.com

FEATURES

81 Guest Rooms • Large, Spacious Suites Available

Complimentary High Speed Internet

Complimentary Express Start Hot® Breakfast

32" LCD Televisions with HD channels



Heated Indoor Pool

**Micro/Fridge
in every room**

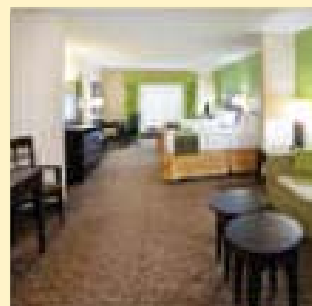
**Exclusive hotel for
Del Webb**

**Many restaurants
within walking distance**

**1,200 square feet of
Meeting/Banquet Space
for corporate meetings
and special events**

**10 Minutes from Nashville
International Airport**

**Adjacent to
Providence Marketplace**



**Close proximity to
many corporate office
buildings and
industrial parks**

Eco-friendly Hotel

**Group rates
available**

615-553-5200 • hiexpressmj.com

Just 20 miles east of Nashville!

LEBANON · MT. JULIET · WATERTOWN



**Three Great Cities.
One Destination.**

WILSON COUNTY

CONVENTION & VISITORS BUREAU



233 E. Gay St.
Lebanon, TN 37087
615.453.9655
800.789.1327

WILSON COUNTY TN

VISITOR GUIDE



Recreation



History



Special Events



Shopping

www.VisitWilsonCounty.com



Experience the wonders of
MIDDLE TENNESSEE